




Traumatic Brain Injury (TBI) Program Flow Chart Explained

MiCARE's innovative TBI Program provides attorneys with objective data, clinical treatment, preliminary causation opinions and other support through protocols (Building **Blocks**) designed to investigate and support clients that have suffered a TBI. MiCARE contracts with attorneys, scientists, and medical doctors to help them navigate TBI claims, negotiate with insurance companies and prepare for litigation within the TBI space. Decisions on which **Blocks** are used, as well as the manner in which they are used, will depend on the facts of each case, the attorney's legal strategy, causation requirements, severity of the injury, case economics, etc.

MiCARE's TBI program is actually quite simple as demonstrated by the attached Flow Chart. Each **Block** on the Flow Chart is explained below. Attorneys are given access to unlimited consults with MiCARE's TBI staff, provided with experienced case managers to schedule and manage clinical treatment and also receive several free 15-minute consults with MiCARE's TBI partners.

-  **TBI CHEQ with Initial Treatment Options - \$3,700. (Forensic).** TBI CheQ provides a summary of a client's self-report data and objective test data across three domains known to be affected by TBI: somatic, cognitive, and psychiatric. While TBI CheQ is not a stand-alone diagnostic test, it provides an initial analysis of the client's symptoms in each of the three domains in order to determine 1) if the client's self-reported symptoms are consistent with the test data and 2) if the presence and severity of symptoms warrant further evaluation and treatment. The TBI CheQ protocol includes a detailed history and symptom questionnaire and 3 hours of specialized testing at specific MiCARE testing facilities.
Initial TREATMENT Options: Upon receiving the TBI CheQ symptom summary, an M.D. (board certified in brain injury medicine) will review the results and identify providers that would best evaluate and treat a client's symptoms. Thereafter MiCARE will manage the client's care with MiCARE network providers. These local providers will outline a comprehensive treatment plan for the client to follow in order to maximize treatment efficiency.
-  **ADVANCED MRI - \$2,000 (Clinical).** Advanced MRI offers a comprehensive imaging protocol that includes DTI data. A radiology report is provided and included in the cost of data collection. Because the Advanced MRI scanner has been calibrated to the Quantify normative database, the data can be sent for Quantify analyses and report at a later date.
-  **QUANTIFY - 5,500. (Forensic).** *Quantify* analyses of the client's gray and white matter are performed on the data collected during the Advanced MRI. *Quantify* compares a client's structural MRI data to a large sample of age and gender matched control subjects. The *Quantify* report has increased sensitivity beyond traditional visual inspection and provides statistically based results indicating whether a client's data is within or outside normal limits.




INTRODUCING the **STAC Program**



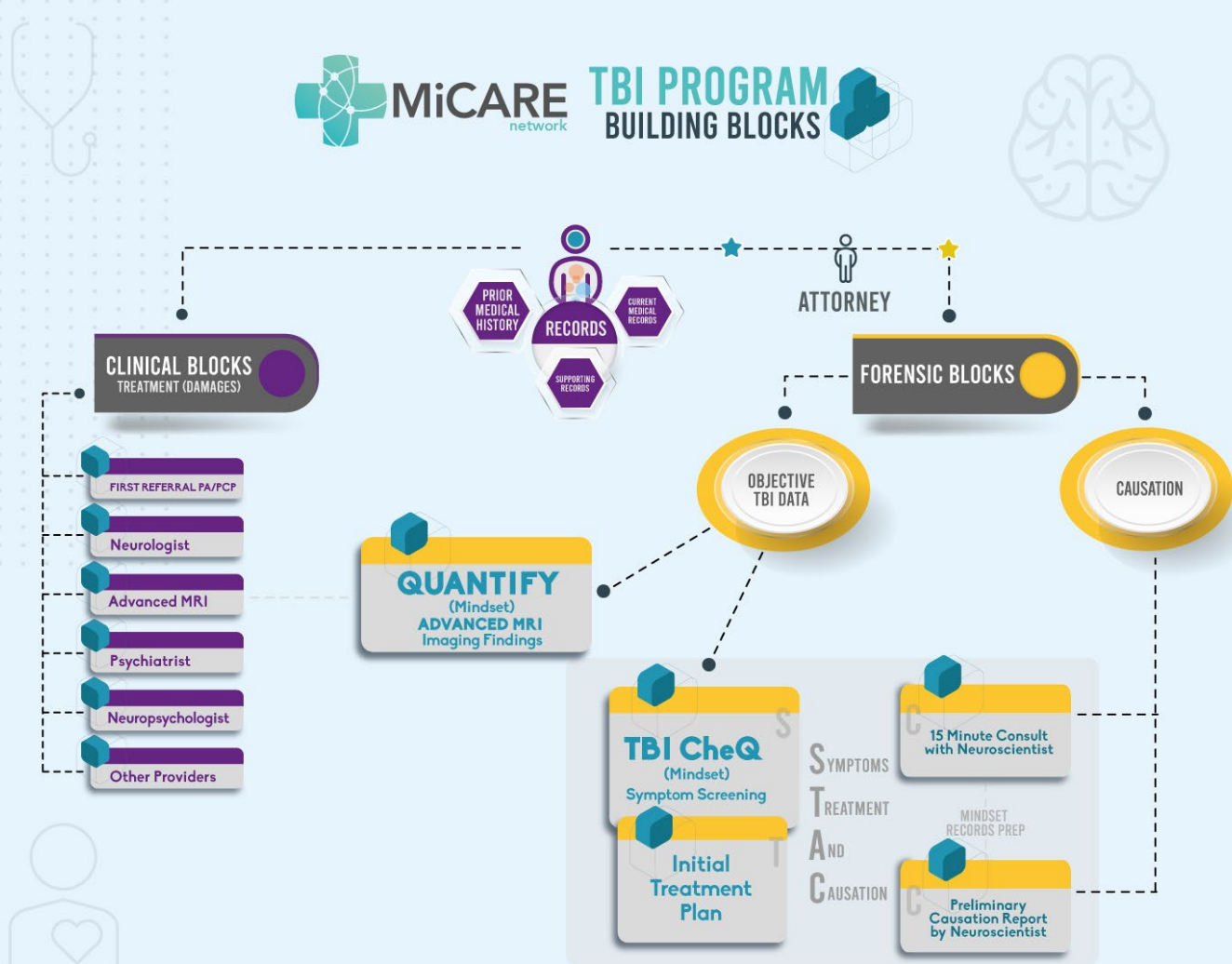
The **STAC TBI Program** is an entry level forensic tool. By using the **STAC** combination of **Blocks**, MiCARE has created an unprecedented support package to assist attorneys in assessing and preparing their TBI cases. Three critical elements of any TBI case are addressed by the STAC Blocks:



- S**ymptoms: TBI CheQ
- T**reatment: Treatment Option by M.D.
- A**nd
- C**ausation: Consult and Preliminary Causation Analysis (includes pertinent records review).

-  **TBI CheQ and Initial Treatment Options:** (explained above.)
-  **CAUSATION Consult - Free (Forensic)** MiCARE will arrange a 15-minute consult with a neuroscientist to evaluate initial causation based on all available facts, testing and data. If there is preliminary support for causation, then the next step would be a Preliminary Causation Analysis.
-  **Preliminary Causation Analysis - \$3,000 plus hourly fees required for record organization.** The neuroscientist preparing the causation analysis will request and review all pertinent records in order to provide a preliminary causation report. The analysis report is a brief, one-page forensic opinion to be used however the attorney sees fit. After the report is finalized, the expert will schedule a second 15-minute call with the attorney to explain the analysis and answer any questions the attorney may have.
*Note: After the Preliminary Causation Report is completed, an attorney may contract **directly** with the neuroscientist to prepare additional expert reports and provide testimony. Other MiCARE network clinical providers may also be retained by the attorney directly for litigation. **The attorney/expert relationship during litigation is independent of MiCARE involvement.***

MiCARE network **TBI PROGRAM**
BUILDING BLOCKS



KEY

CATEGORY ●
MINDSET AND OTHER CONTRACTED ENTITIES

Treatment Providers

- ★ MiCARE CONSULTS BY APPOINTMENT ONLY
Consultations are never charged
- ★ MINDSET CONSULT
15 minutes per case prior to litigation.